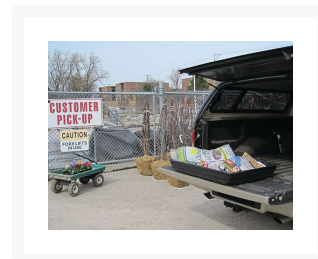
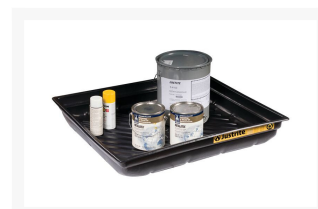




37.75"W x 34"D x 5.5"H, 23 Gallon Spill Capacity, Spill Tray for Indoor/Outdoor Use, EcoPolyBlend™, Black - 28718

Product Images



Short Description

- Keep workers safe from accidental spills indoors and outdoors
- Lightweight and low-profile design for indoor or outdoor small-scale spill control
- Made from 100% recycled polyethylene
- EPA compliant to protect against ground and water contamination
- Sump capacity of 23 gal (87 L)

Description

The Justrite EcoPolyBlend™ Spill Tray (black — model 28718) is used for small-scale spill control. Its raised rib bottom assembly adds rigidity and keeps contents out of spills, making the tray perfect for pouring and filling applications.

This model is suitable for either indoor or outdoor use and measures 37.75 in W x 5.5 in H x 34 in D (959 mm W x 140 mm H x 864 mm D). Its 100% recycled polyethylene construction is eco-friendly and will not rust or corrode.

With a net weight of 6.0 lb (2.7 kg), sump capacity of 23 gal (87 L), and rated service temperature range of -30°F to 120°F (-34°C to 49°C), this EcoPolyBlend spill tray is a useful addition to any spill containment safety measures — whether indoors or outdoors, any time of year.

Why do you need it??

When working with hazardous substances — especially chemicals and fuels — spill trays are highly recommended to prevent mishaps. They help capture incidental leaks and spills, keeping drips and other small leaks from reaching the ground and entering the workplace or environment.

Though these trays should not be used in place of larger spill containment measures, they are still an extremely useful part of a larger containment system. Trays help keep incidental spills and leaks safely contained until you can properly deal with the waste. In areas that work with larger amounts of hazardous substances, spill trays are a valuable secondary or tertiary component of overall spill containment measures.

Specifications

Model No	28718
UPC	697841141773
International Model No.	28718
Brand	Justrite
Pallet Quantity	50
Color	Black
Material Specifications	Recycled Polyethylene
Percent Recycled	100
Sump Capacity - Gallons	23
Sump Capacity - liters	87
Dimensions, Exterior	37.75" W x 5.5" H x 34" D
Dimensions, Exterior	959mm W x 140mm H x 864mm D
Dimensions, Interior	31.875" W x 4.875" H x 28.375" D
Dimensions, Interior	810mm W x 124mm H x 721mm D
Net Weight, lbs	6.0
Net Weight, kg	2.7